



INTERCONTINENTAL®
MONTREAL



EVENTS & MEETINGS

From intimate gatherings to grand celebrations, vintage charm to modern setups, we have the perfect venue for every occasion. Our team of experts is dedicated to bring your vision to life.



SUMMARY

| | |
|---|-------|
| PRESENTATION | 3-4 |
| GENERAL VIEW OF THE VENUES | 5-6 |
| PRESENTATION OF THE VENUES | 7-30 |
| LES VOÛTES | 8 |
| N ^o 0 LA RUELLÉ DES FORTIFICATIONS | 9 |
| J. ARCHAMBAULT | 10 |
| VICTOR HUGO | 12 |
| N ^o RDC LA GALERIE D'ART | 13 |
| CHEZ PLUME | 14 |
| SARAH BERNHARDT | 16 |
| N ^o 2 STRATTON | 17 |
| SHERWOOD | 18 |
| STRATTON SHERWOOD | 19 |
| RAVEL | 21 |
| N ^o 3 HEINTZMAN | 22 |
| BELFOUR | 23 |
| ALBANI | 24 |
| WILCOM | 26 |
| JOSEPH | 27 |
| N ^o 4 DELAFOND | 28 |
| BELLATINI | 29 |
| FRASER | 30 |
| WATSON | 31 |
| N ^o 5 NORTHEIMER | 33 |
| N ^o 6 TERRACE | 34 |
| EXTEND THE EXPERIENCE | 36-37 |

Presentation of the hotel

The InterContinental Montreal, located in the heart of **Old Montreal**, perfectly combines a **historic charm** with **modern comfort**. This hotel offers elegant rooms and suites, a refined restaurant, a unique absinthe bar and spaces dedicated to well-being. Whether for an **unforgettable stay** or a **prestigious event**, every detail is designed to offer an exceptional experience that enhances every moment of your visit.



PERSONALIZED AND ATTENTIVE SERVICE

Are you organizing an event? Inspired by the **atmosphere of private clubs**, the InterContinental Montreal team puts its expertise at your service for stress-free logistics. With meticulous attention to detail and a **package offer tailored to your needs**, your event will be a success.

Touch screens allow you to easily control the physical and technological environment of venues, while permanent catering stations give you flexibility and control over your time and budget.

We guarantee you a **professional service of incomparable quality**.



INTERCONTINENTAL.
MONTREAL

InterContinental Montréal
360, rue Saint-Antoine Ouest, Montréal
(Québec) H2Y 3X4 T: | 514 987-9900 F: |
514 847-8536
banquets@ic-montreal.com
montreal.intercontinental.com



A look at history



THE LEGACY OF THE PAST, THE COMFORT OF TODAY

The InterContinental Montreal opened its doors in 1991 as part of an urban revitalization project. Integrated into the Centre de Commerce Mondial, the hotel combines a modern **26-story tower** with the skillfully restored **historic Nordheimer building**.

Located at the crossroads of Old Montreal and the Financial District, the hotel quickly became a popular destination for travelers and events. Offering **357 rooms, including 23 sumptuous suites**, and modern amenities such as a **fitness center, an absinthe bar and a refined restaurant**. The InterContinental embodies luxury and elegance in a setting that blends heritage and modernity. Its **history and exceptional location** make it a symbol of the fusion of tradition and innovation in Montreal.



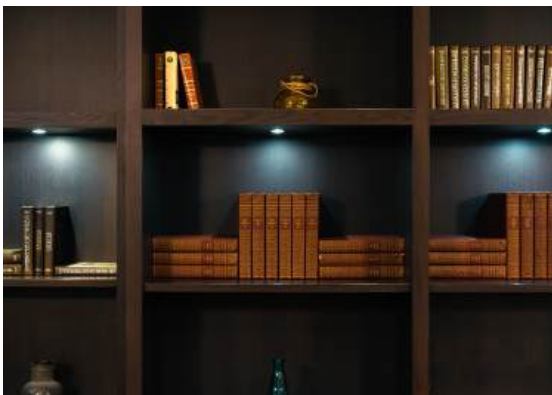
THE NORDHEIMER CONFERENCE CENTER: AN ARCHITECTURAL GEM

In 1848, the A. and S. Nordheimer company opens a branch in Montreal on Saint-Jacques Street. The company specializes in the **sale of musical scores and the production and sale of pianos**. This branch becomes an emblematic place thanks to its **performance hall, considered one of the most beautiful in Canada**.

After being **ravaged by fire** in 1886, the building was rebuilt in 1888 with a **sumptuous architecture** combining shops, a renowned concert hall, and a space dedicated to piano repair. Legendary figures such as Sarah Bernhardt and Maurice Ravel performed there, solidifying its status as a must-see cultural center in Montreal.



In 1903, the building was sold to Alexander Fraser, a wine and spirits merchant. Over time, the building fell into disrepair until it was acquired by the InterContinental Group, which undertook a **meticulous restoration**. Each floor of the restored building celebrates its rich past with themes related to **art, music and the stage**, honouring the unique heritage of the place.



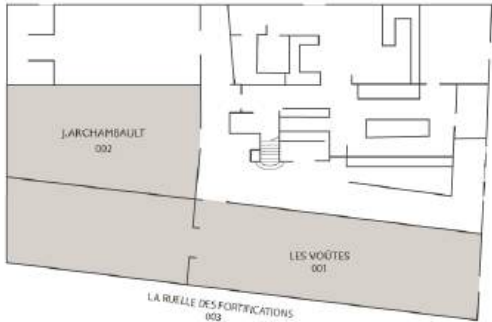


5 Presentation of the venues

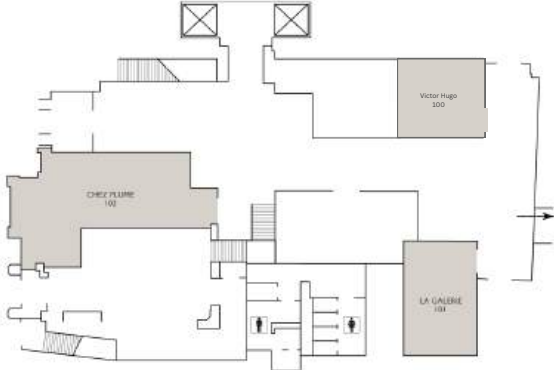
GENERAL VIEW OF THE VENUESS

Level and Layout Plans

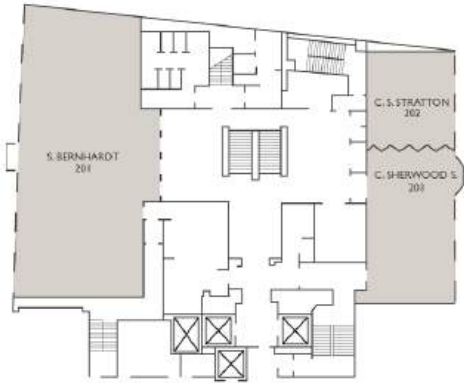
RUELLE LEVEL



GROUND FLOOR



2nd floor



3rd floor



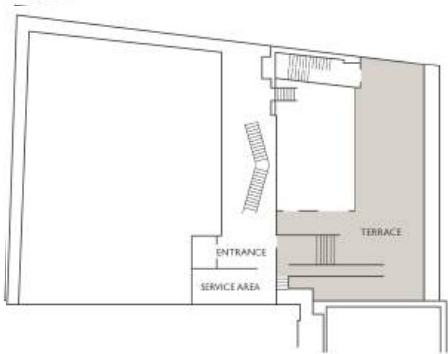
4th floor



5th floor



Terrace



GENERAL VIEW OF THE VENUES

Venues Dimensions and Capacities

| NAME OF VENUES | FLOOR | ft ² | | | ft | | | | | | | | | people | |
|--------------------------------|-------|-----------------|------------------|----------------------|---------|-----------|---------|-----------|------------|-----------------|----|-----------------------|----|----------------|--|
| | | AREA (SQ. FT.) | DIMENSIONS (FT.) | CEILING HEIGHT (FT.) | THEATRE | RECEPTION | BANQUET | CLASSROOM | BOAR-DROOM | U-SHAPE (2) (3) | | HOLLOW SQUARE (2) (3) | | CRESCENT ROUND | |
| LESVOÛTES * | RL | 2 052 | 18 x 114 | 8 | 120 | 250 | 200 | 60 | 52 | 34 | 51 | 36 | 54 | 48 | |
| ARCHAMBAULT * | RL | 700 | 20 x 35 | 8 | 70 | 60 | 60 | 35 | 30 | 18 | 30 | 20 | 34 | 30 | |
| LA RUELLE DES FORTIFICATIONS * | RL | 7 200 | 300 x 27 | - | 400 | 800 | 380 | - | - | - | - | - | - | - | |
| LA GALERIE D'ART | RDC | 672 | 32 x 21 | 19 | 60 | 60 | 60 | 36 | 28 | 16 | 26 | 16 | 28 | 30 | |
| CHEZ PLUME * | RDC | 1369 | 37 x 37 | 19 | - | 120 | 80 | - | - | - | - | - | - | - | |
| S. BERNHARDT * | 2 | 2 368 | 32 x 74 | 15 | 250 | 350 | 240 | 150 | 64 | 48 | 72 | 52 | 78 | 126 | |
| STRATTON * | 2 | 520 | 20 x 26 | 11,9 | 60 | 60 | 50 | 24 | 22 | 16 | 24 | 20 | 30 | 24 | |
| SHERWOOD * | 2 | 740 | 20 x 37 | 11,9 | 80 | 100 | 80 | 36 | 28 | 24 | 36 | 24 | 36 | 48 | |
| STRATTON SHERWOOD * | 2 | 1 260 | 20 x 63 | 11,9 | 140 | 160 | 130 | 60 | 56 | 40 | 60 | 40 | 60 | 72 | |
| RAVEL * | 3 | 1 656 | 23 x 72 | 11,3 | 180 | 200 | 160 | 100 | 58 | 40 | 60 | 44 | 66 | 72 | |
| HEINTZMAN * | 3 | 378 | 21 x 18 | 11,6 | 30 | 30 | 30 | 18 | 16 | 10 | 15 | 12 | 18 | 12 | |
| BELFOUR * | 3 | 567 | 21 x 27 | 11,6 | 60 | 60 | 50 | 24 | 22 | 16 | 24 | 20 | 30 | 24 | |
| ALBANI * | 3 | 294 | 21 x 14 | 11,6 | - | - | - | - | 8 | - | - | - | - | - | |
| WILCOM * | 4 | 500 | 20 x 25 | 11,3 | 48 | 60 | 40 | 24 | 22 | 16 | 24 | 20 | 30 | 24 | |
| JOSEPH * | 4 | 475 | 19 x 25 | 11,3 | 36 | 40 | 30 | 18 | 22 | 10 | 15 | 12 | 18 | 18 | |
| DELAFOND * | 4 | 425 | 17 x 25 | 11,3 | 48 | 50 | 40 | 24 | 22 | 14 | 21 | 16 | 24 | 24 | |
| BELLATINI * | 4 | 378 | 21 x 18 | 11,6 | 30 | 30 | 30 | 18 | 16 | 10 | 15 | 12 | 18 | 12 | |
| FRASER * | 4 | 567 | 21 x 27 | 11,6 | 60 | 60 | 50 | 24 | 22 | 16 | 24 | 20 | 30 | 24 | |
| WATSON * | 4 | 294 | 21 x 14 | 11,6 | - | - | - | - | 8 | - | - | - | - | - | |
| NORDHEIMER* | 5 | 3 365 | 66 x 54 | 17 | 350 | 400 | 270 | 215 | 58 | 44 | 66 | 52 | 78 | 144 | |
| TERRASSE | 6 | 1 760 | - | - | - | 140 | - | - | - | - | - | - | - | - | |

* = Natural daylight

• = Stone vaults

RL = Ruelle Level

RDC = Ground

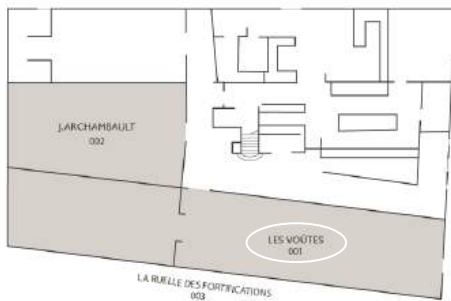
*These capacities are without audiovisual and stage.

LES VOÛTES

During the renovations of the InterContinental in 1991, historic vaults linked to the city's ancient fortifications were discovered. Possibly used for artillery or as cellars, they now offer a unique setting, combining authentic charm and the elegance of a castle cellar. Their atmosphere and their long appearance make them an exceptional place, perfect for memorable evenings and exceptional events.

Keywords: Historic Vaults, Cellars, Charm, Elegance, Unique Atmosphere, Exceptional Place, White Bricks.

Ruelle Level Plan



Level

0



Surface

2052
ft²



Dimensions

18 x 114
ft



Height

8
ft



Theater

80
people



Reception

230
people



Banquet

170
people



School

42
people



Conference

42
people



Style U

33
people



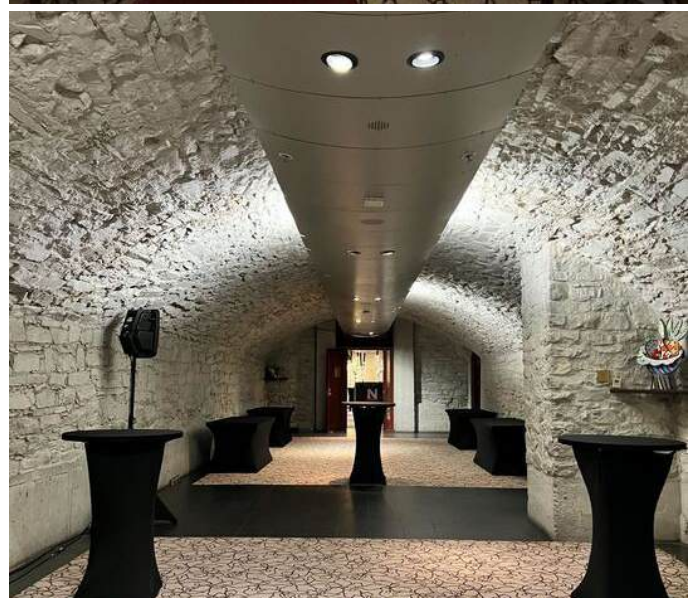
Open Square

30
people



Half moon

36
people

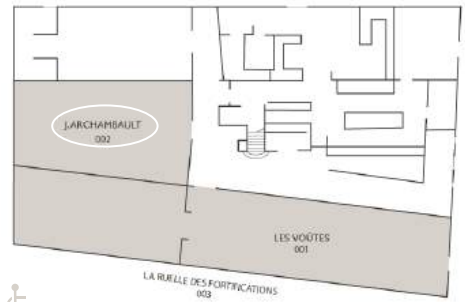


ARCHAMBAULT VENUE

This small, intimate room creates a cozy and warm atmosphere, a perfect setting for a cocktail or a wine of honor. This place invites conviviality, where each moment seems suspended, conducive to exchanges and complicity.

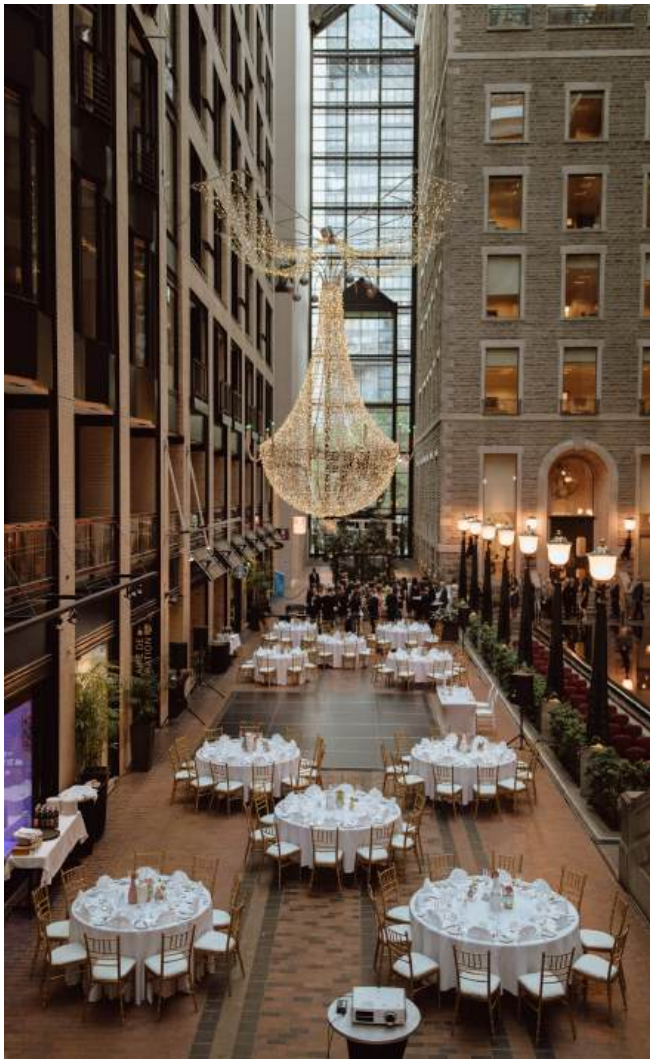
Keywords: Intimate, Cozy atmosphere, Friendly

Ruelle Level Plan



| Level | Surface | Dimensions | Height | Theater | Reception | Banquet | School | Conference | Style U | Open Square | Half moon |
|-------|---------------------|------------|--------|-----------|-----------|-----------|-----------|------------|-----------------|-----------------|-----------|
| 0 | 700 ft ² | 20 x 35 ft | 8 ft | 70 people | 60 people | 60 people | 35 people | 30 people | 18 to 30 people | 20 to 34 people | 30 people |



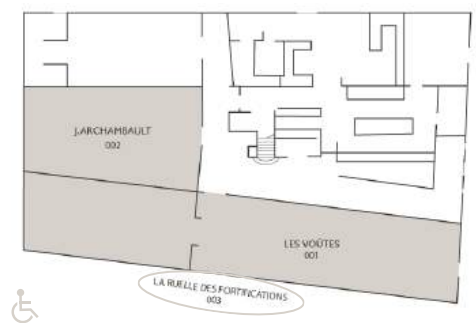


LA RUELE DES FORTIFICATIONS

With its warm brick walls, its bright glass roof and its refined ambiance, this space lends itself perfectly to exceptional events, offering a setting that is as unique as it is memorable.

Keywords: Unique place, Natural light, Majestic glass roof, History and modernity, Warm atmosphere, Fountain

Alley Level Plan



| Level | Surface | Dimensions | Height | Theater | Reception | Banquet | School | Conference | Style U | Open Square | Half moon |
|-------|----------------------|-------------|--------|------------|------------|------------|----------|------------|----------|-------------|-----------|
| 0 | 7200 ft ² | 300 X 27 ft | - ft | 400 people | 800 people | 380 people | - people | - people | - people | - people | - people |




INTERCONTINENTAL®
MONTREAL

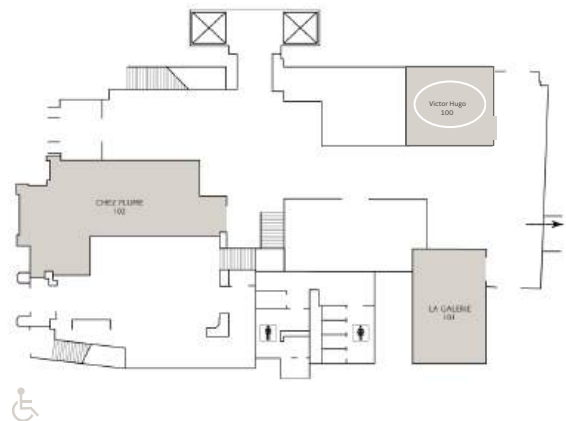
11 Transition to the ground floor.

VICTOR HUGO VENUE

On level zero, the Victor Hugo room is perfect for hosting small meetings, a committee or a presentation for up to 10 people. This room is bright and has a TV screen.

Keywords: Presentation, Bright, Small Group, Modern, TV Screen.

Ground floor



| Level | Surface | Dimensions | Height | Theater | Reception | Banquet | School | Conference | Style U | Open Square | Half moon |
|-------|---------------------|--------------|--------|----------|-----------|----------|----------|------------|----------|-------------|-----------|
| 0 | 274 ft ² | 16.5 x 16 ft | 12 ft | - people | - people | - people | - people | 10 people | 9 people | - people | - people |



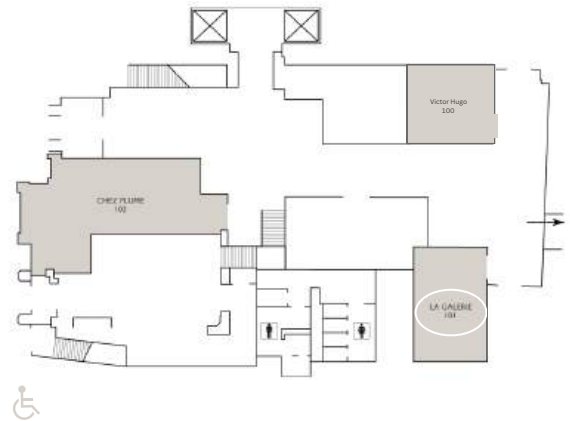
12 Ground floor

LA GALERIE D'ART

With its artistic canvases and its framed historic brick wall, this space combines heritage and contemporary elegance. A unique venue, perfect for inspiring and warm mid-sized events. These artworks are photographs of the hotel.

Keywords: Art, Heritage, Brick wall, Elegance, Unique place, Warm atmosphere.

Ground floor



| Level | Surface | Dimensions | Height | Theater | Reception | Banquet | School | Conference | Style U | Open Square | Half moon |
|-------|------------------------|---------------|----------|--------------|--------------|--------------|--------------|--------------|--------------------|--------------------|--------------|
| 0 | 672 ft ² | 32 X 21 ft | 19 ft | 60 people | 60 people | 60 people | 36 people | 28 people | 16 to 26 people | 16 to 28 people | 30 people |



13 Ground floor

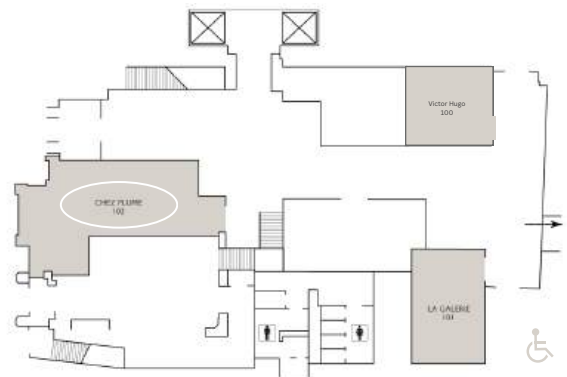


CHEZ PLUME

A former brasserie with timeless charm, Chez Plume seduces with its elegant decor, majestic columns and art deco touches.

Keywords: Natural Light, Historic Brasserie, Elegant Decor, Art Deco, Warm Atmosphere, Refinement, Friendly Events.

Ground floor



| Level | Surface | Dimensions | Height | Theater | Reception | Banquet | School | Conference | Style U | Open Square | Half moon |
|-------|-------------------------|---------------|----------|-------------|---------------|--------------|-------------|-------------|-------------|-------------|-------------|
| 0 | 1369 ft ² | 37 x 37 ft | 19 ft | - people | 100 people | 80 people | - people | - people | - people | - people | - people |

14 Ground floor



15 Transition to level 2



SARAH BERNHARDT VENUE

This sumptuous ballroom is distinguished by its classic elegance, ornate ceiling and large windows that flood the space with natural light. This is the famous performance hall, extremely renowned in the 1800s in Montreal and Canada. With its prestigious atmosphere, it is perfect for memorable banquets, receptions or corporate events.

Keywords: Ballroom, Classic Elegance, Natural Light, Prestige, Woodwork, Banquets, Receptions, Corporate Events.

2nd floor



| | | | |
|-------|-------------------------|---------------|----------|
| | | | |
| Level | Surface | Dimensions | Height |
| 2 | 2368 ft ² | 32 x 74 ft | 15 ft |

| | | | |
|---------------|---------------|---------------|---------------|
| | | | |
| Theater | Reception | Banquet | School |
| 250 people | 350 people | 240 people | 150 people |

| | | | |
|--------------|--------------------|--------------------|--------------|
| | | | |
| Conference | Style U | Open Square | Half moon |
| 64 people | 48 to 72 people | 52 to 78 people | 30 people |



STRATTON VENUE

2nd floor

This charming room offers a warm atmosphere and its large windows provide beautiful natural light. Ideal for meetings, conferences or intimate meals, it combines comfort and functionality.

A movable partition separates it from the Sherwood Venue, creating an even larger space to host larger events.

Keywords: Meetings, Conferences, Natural light, Elegance, Comfort, Versatile, Movable partition, Private events, Large space.



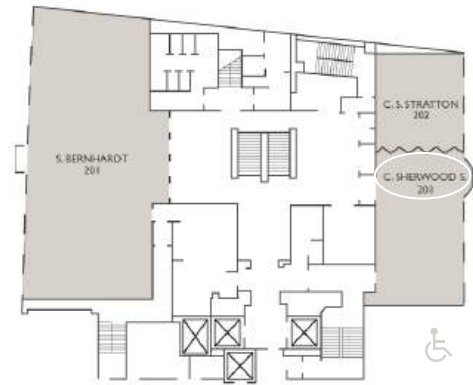
| Level | Surface | Dimensions | Height | Theater | Reception | Banquet | School | Conference | Style U | Open Square | Half moon |
|-------|---------------------|------------|---------|-----------|-----------|-----------|-----------|------------|-----------------|-----------------|-----------|
| 2 | 520 ft ² | 20 x 26 ft | 11.9 ft | 60 people | 60 people | 50 people | 24 people | 22 people | 16 to 24 people | 20 to 30 people | 24 people |

SHERWOOD VENUE

2nd floor

The bright and elegant Sherwood Venue is ideal for meetings and seminars. Its large windows provide beautiful natural light, and its removable partition with the Stratton Venue allows to create a larger space for large events.

Keywords: Meetings, Seminars, Natural light, Elegance, Versatile, Movable partition, Corporate events.



| Level | Surface | Dimensions | Height | Theater | Reception | Banquet | School | Conference | Style U | Open Square | Half moon |
|-------|---------------------|------------|---------|-----------|------------|-----------|-----------|------------|-----------------|-----------------|-----------|
| 2 | 740 ft ² | 20 x 37 ft | 11.9 ft | 80 people | 100 people | 80 people | 36 people | 28 people | 24 to 36 people | 24 to 36 people | 48 people |

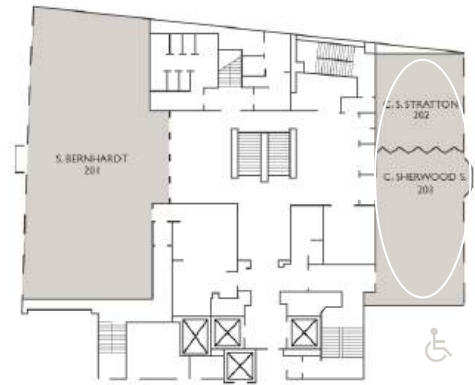


STRATTON SHERWOOD VENUE

2nd floor

The bright and elegant Stratton Sherwood Venue is ideal for a large event. With beautiful natural light and ample space it is very versatile.

Keywords: Natural light, Large, Versatile, Movable partition, Corporate events.



| Level | Surface | Dimensions | Height | Theater | Reception | Banquet | School | Conference | Style U | Open Square | Half moon |
|-------|----------------------|------------|---------|------------|------------|------------|-----------|------------|-----------------|-----------------|-----------|
| 2 | 1260 ft ² | 20 x 63 ft | 11.9 ft | 140 people | 160 people | 130 people | 60 people | 50 people | 40 to 60 people | 44 to 66 people | 72 people |





RAVEL VENUE

Spacious and versatile, the Ravel Venue is ideal for elegant banquets, conferences or training sessions. Its large dimensions, refined decor and warm lighting make it a perfect choice for memorable events, whether private or corporate.

Keywords: Banquets, Conferences, Versatility, Elegance, Ballroom, Wooden Column and Elegant.

3rd floor



| | | | |
|-------|---------|------------|--------|
| | | | |
| Level | Surface | Dimensions | Height |

| | | | |
|---|-------------------------|---------------|------------|
| 3 | 1656 ft ² | 23 x 72 ft | 11.3 ft |
|---|-------------------------|---------------|------------|

| | | | |
|---------|-----------|---------|--------|
| | | | |
| Theater | Reception | Banquet | School |

| | | | |
|---------------|---------------|---------------|---------------|
| 180 people | 200 people | 160 people | 100 people |
|---------------|---------------|---------------|---------------|

| | | | |
|------------|---------|-------------|-----------|
| | | | |
| Conference | Style U | Open Square | Half moon |

| | | | |
|--------------|--------------------|--------------------|--------------|
| 58 people | 40 to 60 people | 44 to 66 people | 72 people |
|--------------|--------------------|--------------------|--------------|



HEINTZMAN VENUE

The Heintzman Venue is an intimate lounge bathed in natural light, offering an ideal private setting for small meetings or confidential events. Its careful layout and its adapted access for people with reduced mobility make it a practical and welcoming space.

Keywords: Intimate lounge, Natural light, Private, Meetings, TV screen.

3rd floor



| Level | Surface | Dimensions | Height | Theater | Reception | Banquet | School | Conference | Style U | Open Square | Half moon |
|-------|------------------------|---------------|------------|--------------|--------------|--------------|--------------|--------------|--------------------|--------------------|--------------|
| 3 | 378 ft ² | 21 x 18 ft | 11.6 ft | 30 people | 30 people | 30 people | 18 people | 16 people | 10 to 15 people | 12 to 18 people | 12 people |



BELFOUR VENUE

The Belfour Venue is ideal for hosting groups of 20 to 30 people. Boasting a pleasant view and beautiful natural light, this versatile room is ideal for U-shaped configurations, elegant dinners or convivial cocktails.

Keywords: Medium group, Natural light, View, U-shape, Dinner, Cocktail.



3rd floor



| Icon | Level | Surface | Dimensions | Height | |
|------|-----------------|---------------------|------------|---------|-----------------|
| | 3 | 567 ft ² | 21 x 27 ft | 11.6 ft | |
| | 60 people | | 60 people | | 50 people |
| | 24 people | | 22 people | | 16 to 24 people |
| | 20 to 30 people | | 24 people | | |



ALBANI VENUE

The Albani Venue is a small meeting room designed for board meetings or private meetings. Intimate and elegant, it offers comfortable armchairs, an integrated screen and natural light, creating an ideal setting for professional discussions in small groups (up to 8 people).

Keywords: Intimate, Private, Boardroom, Armchairs, Integrated screen, Natural light.

3rd floor



| Level | Surface | Dimensions | Height | Theater | Reception | Banquet | School | Conference | Style U | Open Square | Half moon |
|-------|---------------------|------------|---------|----------|-----------|----------|----------|------------|----------|-------------|-----------|
| 3 | 294 ft ² | 21 x 14 ft | 11.6 ft | - people | - people | - people | - people | 8 people | - people | - people | - people |



INTERCONTINENTAL®
MONTREAL

WILCOM VENUE

4th floor

The Wilcom room is an ideal lounge with a central fireplace, perfect for small intimate meetings in a warm and private setting. Designed to be accessible to all, it also has access adapted for people with reduced mobility. Here the central fireplace is included in the rental.

Keywords: Central foyer, Intimate, Private, Meetings, TV screen.



| Level | Surface | Dimensions | Height | Theater | Reception | Banquet | School | Conference | Style U | Open Square | Half moon |
|-------|---------------------|------------|---------|-----------|-----------|-----------|-----------|------------|-----------------|-----------------|-----------|
| 4 | 500 ft ² | 20 x 25 ft | 11.3 ft | 48 people | 60 people | 40 people | 24 people | 22 people | 16 to 24 people | 20 to 30 people | 24 people |





JOSEPH VENUE

The Joseph Venue offers a perfect space for small, intimate meetings. Its windows open onto the interior space of the Nordheimer building. Here the central fireplace is included in the rental.

Keywords: Intimate, Private, Meetings, Disabled access, Bright, TV screen.

and floor



| Level | Surface | Dimensions | Height | Theater | Reception | Banquet | School | Conference | Style U | Open Square | Half moon |
|-------|---------------------|------------|---------|-----------|-----------|-----------|-----------|------------|-----------------|-----------------|-----------|
| 4 | 475 ft ² | 19 x 25 ft | 11.3 ft | 36 people | 40 people | 30 people | 18 people | 22 people | 10 to 15 people | 12 to 18 people | 18 people |

DELAFOND VENUE

The Delafond room is, like the Wilcom room, an ideal lounge with a central fireplace, perfect for small intimate meetings in a warm and private setting. Designed to be accessible to all, it also has access adapted for people with reduced mobility. Here the central fireplace is included in the rental.

Keywords: Central foyer, Intimate, Private, Meetings, TV screen.

4th floor



| Level | Surface | Dimensions | Height | Theater | Reception | Banquet | School | Conference | Style U | Open Square | Half moon |
|-------|---------------------|------------|---------|-----------|-----------|-----------|-----------|------------|-----------------|-----------------|-----------|
| 4 | 425 ft ² | 17 x 25 ft | 11.3 ft | 48 people | 50 people | 40 people | 24 people | 22 people | 14 to 21 people | 16 to 24 people | 24 people |





BELLATINI VENUE

4th floor

The Bellatini Venue, like the Heintzman Venue on the lower floor, is an intimate lounge bathed in natural light, offering an ideal private setting for small meetings or confidential events. Its layout is neat and its access is adapted for people with reduced mobility.

Keywords: Intimate lounge, Natural light, Private, Meetings, TV screen.



| Level | Surface | Dimensions | Height | Theater | Reception | Banquet | School | Conference | Style U | Open Square | Half moon |
|-------|---------------------|------------|---------|-----------|-----------|-----------|-----------|------------|-----------------|-----------------|-----------|
| 4 | 378 ft ² | 21 x 18 ft | 11.6 ft | 30 people | 30 people | 30 people | 18 people | 16 people | 10 to 15 people | 12 to 18 people | 12 people |

FRASER VENUE

4th floor

The Fraser Venue, like the Belfour Venue but on the floor above, is ideal for hosting groups of 20 to 30 people. Boasting pleasant views and beautiful natural light, this versatile room is ideal for U-shaped configurations, elegant dinners or convivial cocktails.

Keywords: Medium group, Natural light, View, U-shaped configuration, Dinner, Cocktail.



| Level | Surface | Dimensions | Height | Theater | Reception | Banquet | School | Conference | Style U | Open Square | Half moon |
|-------|------------------------|---------------|------------|--------------|--------------|--------------|--------------|--------------|--------------------|--------------------|--------------|
| 4 | 567 ft ² | 21 x 27 ft | 11.6 ft | 60 people | 60 people | 50 people | 24 people | 22 people | 16 to 24 people | 20 to 30 people | 24 people |





WATSON VENUE

The Watson Venue, like the Albani Venue on the lower floor, is a small meeting room designed for board meetings or private meetings. Intimate and elegant, it offers comfortable seating, a built-in screen and natural light, creating an ideal setting for small business discussions (up to 8 people).

Keywords: Intimate, Private, Boardroom, Armchairs, Integrated screen, Natural light.

4th floor



| Level | Surface | Dimensions | Height | Theater | Reception | Banquet | School | Conference | Style U | Open Square | Half moon |
|-------|---------------------|------------|---------|----------|-----------|----------|----------|------------|----------|-------------|-----------|
| 4 | 294 ft ² | 21 x 14 ft | 11.6 ft | - people | - people | - people | - people | 8 people | - people | - people | - people |

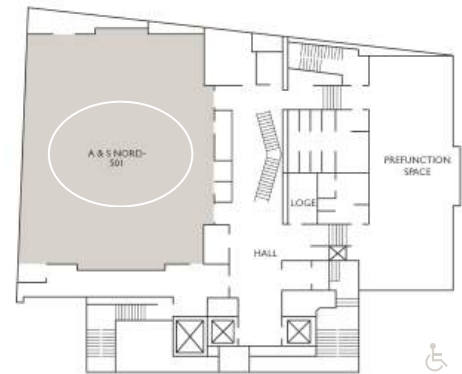


NORDHEIMER VENUE

5th floor

The Nordheimer Venue is a modern and versatile space, perfect for large-scale events or exclusive meetings. Bright and spacious, it stands out for its contemporary design and functional equipment. Its large private terrace offers an exceptional setting for receptions or outdoor relaxation. The private floor completes the experience with an elegant and intimate space, ideal for confidential meetings or events.

Keywords: Modern, Bright, Terrace, Private floor, Spacious, Functional.



| Level | Surface | Dimensions | Height | Theater | Reception | Banquet | School | Conference | Style U | Open Square | Half moon |
|-------|-----------------------|------------|--------|------------|------------|------------|------------|------------|-----------------|-----------------|------------|
| 5 | 3 365 ft ² | 66 x 55 ft | 17 ft | 350 people | 400 people | 270 people | 215 people | 58 people | 44 to 66 people | 52 to 78 people | 144 people |

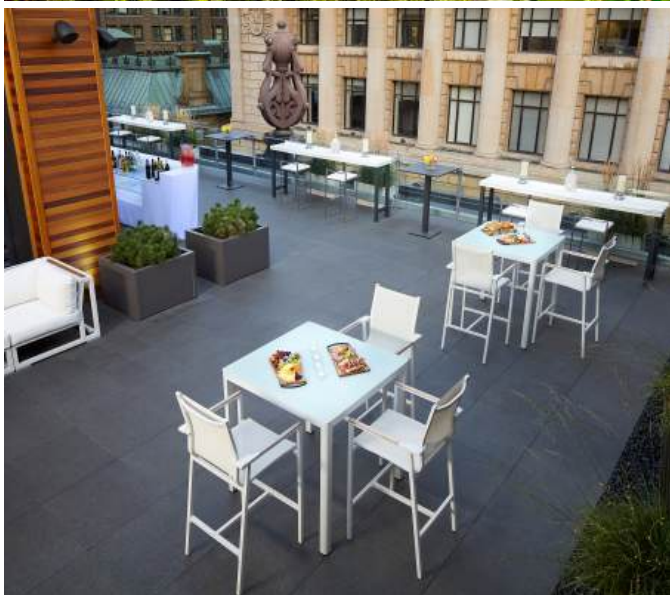




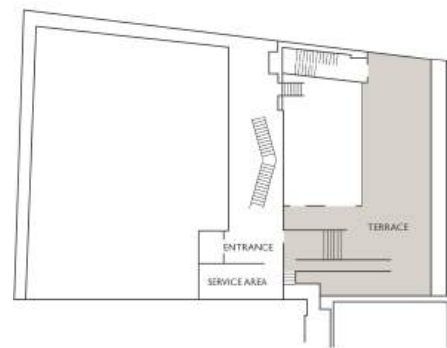
TERRACE VENUE

Nordheimer's L-shaped 5th-floor terrace offers spectacular views of Old Montreal. Spacious and modern, it's the perfect setting for outdoor events or private relaxation.

Keywords: L-shaped terrace, Breathtaking view, Old Montreal, Spacious, Modern.



Terrace



Level

6



Surface

1760
ft²



Dimensions

-
ft



Height

-
ft



Theater

-
people



Reception

140
people



Banquet

-
people



School

-
people



Conference

-
people



Style U

-
people



Open Square

-
people



Half moon

-
people





Extend your day in style. After your meeting or event, let the day continue around a gourmet table.

At the Osco! restaurant, our chef showcases seasonal produce, through a Table d'Hôte offered each week, to create warm, responsible and refined cuisine, perfect for sharing a friendly moment.

**WANT A MORE EXCLUSIVE SETTING FOR YOUR EVENTS?
KEEP OUR OSCO SPACES PRIVATE! :**



The Rotunda

La Rotonde, offers a superb view of Place Riopelle, ideal for elegant meals or receptions. Can accommodate 6 to 12 people seated.

L'Entre-Deux

L'Entre-Deux, an intimate and discreet setting, perfect for private meetings or small events. L'Entre-Deux is a room with large windows offering a bath of natural light and a view of Place Riopelle.

This space can accommodate 30 people seated and 50 people standing.





A FAVORITE PLACE TO DISCOVER ABSINTHE

After your event, extend the evening in the cozy and intimate atmosphere of Sarah B.. This voluptuous absinthe bar, with its timeless charm, is the perfect location for meetings over a drink, whether professional or friendly.

Enjoy signature cocktails or indulge in a unique experience: an absinthe tasting, showcasing Quebec's most refined creations.

Bar Sarah B pays tribute to the legendary actress Sarah Bernhardt, an icon of 19th century theater.

Nicknamed "the Divine", she captivated the world with her captivating voice and charismatic stage presence.

Absinthe, a spirit which, like the actress, has fascinated and seduced with its mysteries for centuries.





InterContinental Montréal
360, rue Saint-Antoine Ouest, Montréal (Québec) H2Y 3X4 T: |
514 987-9900 F: | 514 847-8536
banquets@ic-montreal.com
montreal.intercontinental.com