



INTERCONTINENTAL®
MONTREAL



EVENTS & MEETINGS

From intimate gatherings to grand celebrations, vintage charm to modern setups, we have the perfect venue for every occasion. Our team of experts is dedicated to bring your vision to life.



SUMMARY

PRESENTATION	3-4
GENERAL VIEW OF THE VENUES	5-6
PRESENTATION OF THE VENUES	7-30
LES VOÛTES	8
N ^o 0 LA RUELLÉ DES FORTIFICATIONS	9
J. ARCHAMBAULT	10
VICTOR HUGO	12
N ^o RDC LA GALERIE D'ART	13
CHEZ PLUME	14
SARAH BERNHARDT	16
N ^o 2 STRATTON	17
SHERWOOD	18
STRATTON SHERWOOD	19
RAVEL	21
N ^o 3 HEINTZMAN	22
BELFOUR	23
ALBANI	24
WILCOM	26
JOSEPH	27
N ^o 4 DELAFOND	28
BELLATINI	29
FRASER	30
WATSON	31
N ^o 5 NORTHEIMER	33
N ^o 6 TERRACE	34
EXTEND THE EXPERIENCE	36-37

Presentation of the hotel

The InterContinental Montreal, located in the heart of **Old Montreal**, perfectly combines a **historic charm** with **modern comfort**. This hotel offers elegant rooms and suites, a refined restaurant, a unique absinthe bar and spaces dedicated to well-being. Whether for an **unforgettable stay** or a **prestigious event**, every detail is designed to offer an exceptional experience that enhances every moment of your visit.



PERSONALIZED AND ATTENTIVE SERVICE

Are you organizing an event? Inspired by the **atmosphere of private clubs**, the InterContinental Montreal team puts its expertise at your service for stress-free logistics. With meticulous attention to detail and a **package offer tailored to your needs**, your event will be a success.

Touch screens allow you to easily control the physical and technological environment of venues, while permanent catering stations give you flexibility and control over your time and budget.

We guarantee you a **professional service of incomparable quality**.



INTERCONTINENTAL.
MONTREAL

InterContinental Montréal
360, rue Saint-Antoine Ouest, Montréal
(Québec) H2Y 3X4 T: | 514 987-9900 F: |
514 847-8536
banquets@ic-montreal.com
montreal.intercontinental.com



A look at history



THE LEGACY OF THE PAST, THE COMFORT OF TODAY

The InterContinental Montreal opened its doors in 1991 as part of an urban revitalization project. Integrated into the Centre de Commerce Mondial, the hotel combines a modern **26-story tower** with the skillfully restored **historic Nordheimer building**.

Located at the crossroads of Old Montreal and the Financial District, the hotel quickly became a popular destination for travelers and events. Offering **357 rooms, including 23 sumptuous suites**, and modern amenities such as a **fitness center, an absinthe bar and a refined restaurant**. The InterContinental embodies luxury and elegance in a setting that blends heritage and modernity. Its **history and exceptional location** make it a symbol of the fusion of tradition and innovation in Montreal.



THE NORDHEIMER CONFERENCE CENTER: AN ARCHITECTURAL GEM

In 1848, the A. and S. Nordheimer company opens a branch in Montreal on Saint-Jacques Street. The company specializes in the **sale of musical scores and the production and sale of pianos**. This branch becomes an emblematic place thanks to its **performance hall, considered one of the most beautiful in Canada**.

After being **ravaged by fire** in 1886, the building was rebuilt in 1888 with a **sumptuous architecture** combining shops, a renowned concert hall, and a space dedicated to piano repair. Legendary figures such as Sarah Bernhardt and Maurice Ravel performed there, solidifying its status as a must-see cultural center in Montreal.



In 1903, the building was sold to Alexander Fraser, a wine and spirits merchant. Over time, the building fell into disrepair until it was acquired by the InterContinental Group, which undertook a **meticulous restoration**. Each floor of the restored building celebrates its rich past with themes related to **art, music and the stage**, honouring the unique heritage of the place.

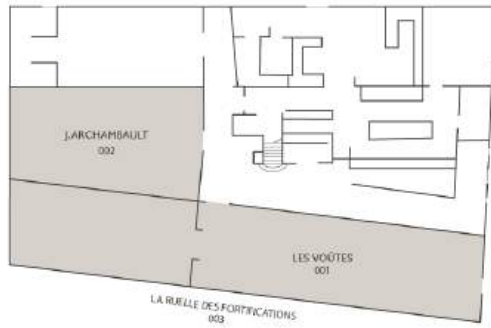




GENERAL VIEW OF THE VENUESS

Level and Layout Plans

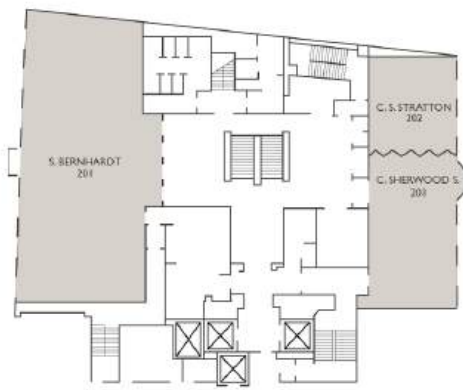
RUELLE LEVEL



GROUND FLOOR



2nd floor



3rd floor



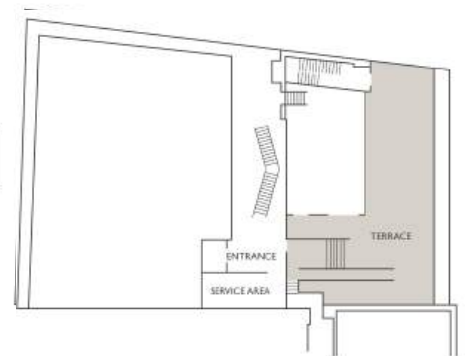
4th floor



5th floor



Terrace



GENERAL VIEW OF THE VENUES

Venues Dimensions and Capacities

NAME OF VENUES	FLOOR	ft ²			ft									people	
		AREA (SQ. FT.)	DIMENSIONS (FT.)	CEILING HEIGHT (FT.)	THEATRE	RECEPTION	BANQUET	CLASSROOM	BOAR-DROOM	U-SHAPE (2) (3)		HOLLOW SQUARE (2) (3)		CRESCENT ROUND	
LESVOÛTES *	RL	2 052	18 x 114	8	120	250	200	60	52	34	51	36	54	48	
ARCHAMBAULT *	RL	700	20 x 35	8	70	60	60	35	30	18	30	20	34	30	
LA RUELLE DES FORTIFICATIONS *	RL	7 200	300 x 27	-	400	800	380	-	-	-	-	-	-	-	
LA GALERIE D'ART	RDC	672	32 x 21	19	60	60	60	36	28	16	26	16	28	30	
CHEZ PLUME *	RDC	1369	37 x 37	19	-	120	80	-	-	-	-	-	-	-	
S. BERNHARDT *	2	2 368	32 x 74	15	250	350	240	150	64	48	72	52	78	126	
STRATTON *	2	520	20 x 26	11,9	60	60	50	24	22	16	24	20	30	24	
SHERWOOD *	2	740	20 x 37	11,9	80	100	80	36	28	24	36	24	36	48	
STRATTON SHERWOOD *	2	1 260	20 x 63	11,9	140	160	130	60	56	40	60	40	60	72	
RAVEL *	3	1 656	23 x 72	11,3	180	200	160	100	58	40	60	44	66	72	
HEINTZMAN *	3	378	21 x 18	11,6	30	30	30	18	16	10	15	12	18	12	
BELFOUR *	3	567	21 x 27	11,6	60	60	50	24	22	16	24	20	30	24	
ALBANI *	3	294	21 x 14	11,6	-	-	-	-	8	-	-	-	-	-	
WILCOM *	4	500	20 x 25	11,3	48	60	40	24	22	16	24	20	30	24	
JOSEPH *	4	475	19 x 25	11,3	36	40	30	18	22	10	15	12	18	18	
DELAFOND *	4	425	17 x 25	11,3	48	50	40	24	22	14	21	16	24	24	
BELLATINI *	4	378	21 x 18	11,6	30	30	30	18	16	10	15	12	18	12	
FRASER *	4	567	21 x 27	11,6	60	60	50	24	22	16	24	20	30	24	
WATSON *	4	294	21 x 14	11,6	-	-	-	-	8	-	-	-	-	-	
NORDHEIMER*	5	3 365	66 x 54	17	350	400	270	215	58	44	66	52	78	144	
TERRASSE	6	1 760	-	-	-	140	-	-	-	-	-	-	-	-	

* = Natural daylight

• = Stone vaults

RL = Ruelle Level

RDC = Ground

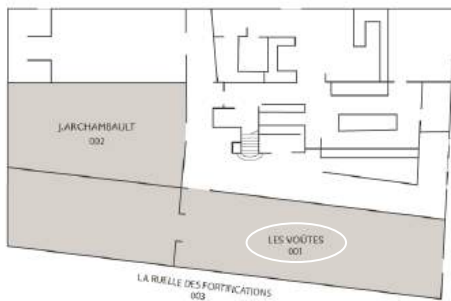
*These capacities are without audiovisual and stage.

LES VOÛTES

During the renovations of the InterContinental in 1991, historic vaults linked to the city's ancient fortifications were discovered. Possibly used for artillery or as cellars, they now offer a unique setting, combining authentic charm and the elegance of a castle cellar. Their atmosphere and their long appearance make them an exceptional place, perfect for memorable evenings and exceptional events.

Keywords: Historic Vaults, Cellars, Charm, Elegance, Unique Atmosphere, Exceptional Place, White Bricks.

Ruelle Level Plan



Level	Surface	Dimensions	Height
0	2052 ft ²	18 x 114 ft	8 ft
Theater	Reception	Banquet	School
80 people	230 people	170 people	42 people
Conference	Style U	Open Square	Half moon
42 people	33 people	30 people	36 people

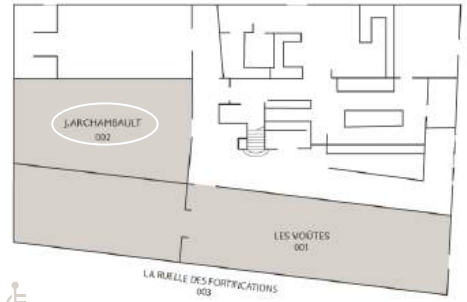


ARCHAMBAULT VENUE

This small, intimate room creates a cozy and warm atmosphere, a perfect setting for a cocktail or a wine of honor. This place invites conviviality, where each moment seems suspended, conducive to exchanges and complicity.

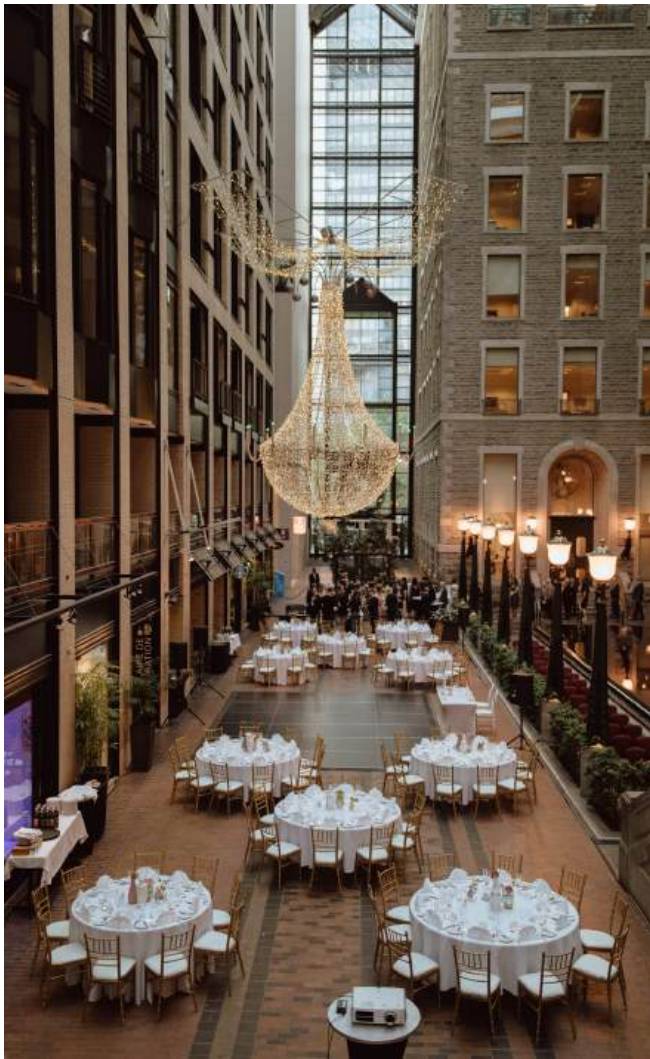
Keywords: Intimate, Cozy atmosphere, Friendly

Ruelle Level Plan



Level	Surface	Dimensions	Height	Theater	Reception	Banquet	School	Conference	Style U	Open Square	Half moon
0	700 ft ²	20 x 35 ft	8 ft	70 people	60 people	60 people	35 people	30 people	18 to 30 people	20 to 34 people	30 people



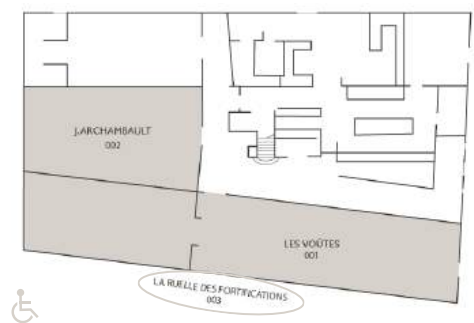


LA RUELE DES FORTIFICATIONS

With its warm brick walls, its bright glass roof and its refined ambiance, this space lends itself perfectly to exceptional events, offering a setting that is as unique as it is memorable.

Keywords: Unique place, Natural light, Majestic glass roof, History and modernity, Warm atmosphere, Fountain

Alley Level Plan



Level	Surface	Dimensions	Height	Theater	Reception	Banquet	School	Conference	Style U	Open Square	Half moon
0	7200 ft ²	300 X 27 ft	- ft	400 people	800 people	380 people	- people	- people	- people	- people	- people




INTERCONTINENTAL®
MONTREAL

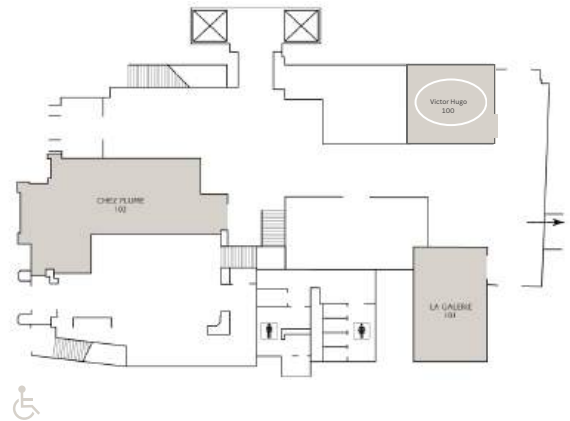
11 Transition to the ground floor.

VICTOR HUGO VENUE

On level zero, the Victor Hugo room is perfect for hosting small meetings, a committee or a presentation for up to 10 people. This room is bright and has a TV screen.

Keywords: Presentation, Bright, Small Group, Modern, TV Screen.

Ground floor



Level	Surface	Dimensions	Height	Theater	Reception	Banquet	School	Conference	Style U	Open Square	Half moon
0	274 ft ²	16.5 x 16 ft	12 ft	- people	- people	- people	- people	10 people	9 people	- people	- people



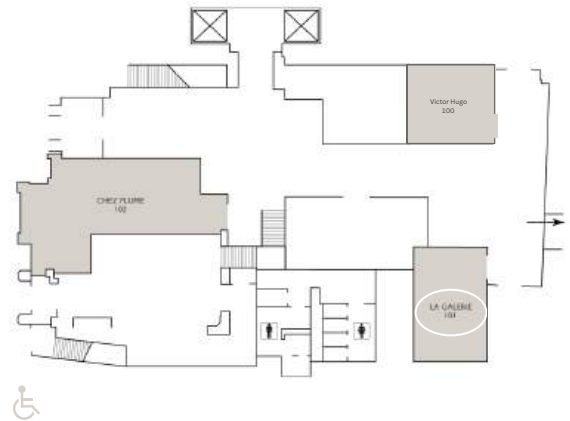
12 Ground floor

LA GALERIE D'ART

With its artistic canvases and its framed historic brick wall, this space combines heritage and contemporary elegance. A unique venue, perfect for inspiring and warm mid-sized events. These artworks are photographs of the hotel.

Keywords: Art, Heritage, Brick wall, Elegance, Unique place, Warm atmosphere.

Ground floor



Level	Surface	Dimensions	Height	Theater	Reception	Banquet	School	Conference	Style U	Open Square	Half moon
0	672 ft ²	32 X 21 ft	19 ft	60 people	60 people	60 people	36 people	28 people	16 to 26 people	16 to 28 people	30 people



13 Ground floor

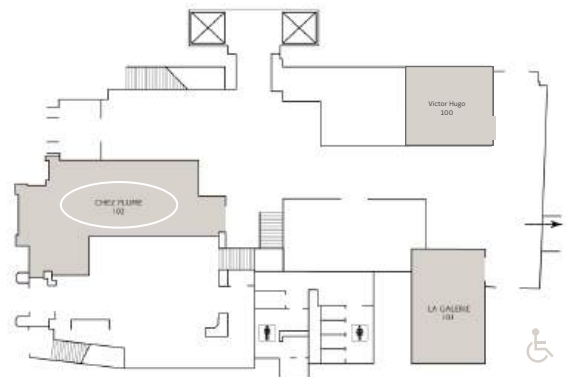


CHEZ PLUME

A former brasserie with timeless charm, Chez Plume seduces with its elegant decor, majestic columns and art deco touches.

Keywords: Natural Light, Historic Brasserie, Elegant Decor, Art Deco, Warm Atmosphere, Refinement, Friendly Events.

Ground floor



Level



Surface



Dimensions



Height



Theater



Reception



Banquet



School



Conference



Style U



Open Square



Half moon

0

1369
ft²

37 x 37
ft

19
ft

-
people

100
people

80
people

-
people

-
people

-
people

-
people

-
people

14 Ground floor



15 Transition to level 2



SARAH BERNHARDT VENUE

This sumptuous ballroom is distinguished by its classic elegance, ornate ceiling and large windows that flood the space with natural light. This is the famous performance hall, extremely renowned in the 1800s in Montreal and Canada. With its prestigious atmosphere, it is perfect for memorable banquets, receptions or corporate events.

Keywords: Ballroom, Classic Elegance, Natural Light, Prestige, Woodwork, Banquets, Receptions, Corporate Events.

2nd floor



Level	Surface	Dimensions	Height
2	2368 ft ²	32 x 74 ft	15 ft

Theater	Reception	Banquet	School
250 people	350 people	240 people	150 people

Conference	Style U	Open Square	Half moon
64 people	48 to 72 people	52 to 78 people	30 people



STRATTON VENUE

2nd floor

This charming room offers a warm atmosphere and its large windows provide beautiful natural light. Ideal for meetings, conferences or intimate meals, it combines comfort and functionality.

A movable partition separates it from the Sherwood Venue, creating an even larger space to host larger events.

Keywords: Meetings, Conferences, Natural light, Elegance, Comfort, Versatile, Movable partition, Private events, Large space.



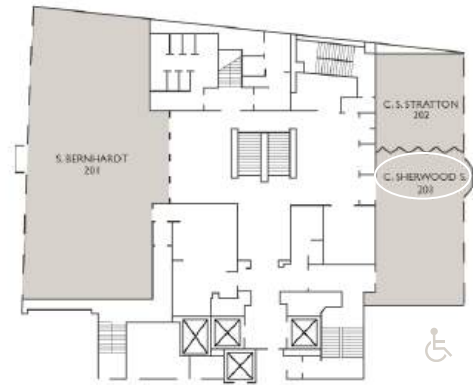
Level	Surface	Dimensions	Height	Theater	Reception	Banquet	School	Conference	Style U	Open Square	Half moon
2	520 ft ²	20 x 26 ft	11.9 ft	60 people	60 people	50 people	24 people	22 people	16 to 24 people	20 to 30 people	24 people

SHERWOOD VENUE

2nd floor

The bright and elegant Sherwood Venue is ideal for meetings and seminars. Its large windows provide beautiful natural light, and its removable partition with the Stratton Venue allows to create a larger space for large events.

Keywords: Meetings, Seminars, Natural light, Elegance, Versatile, Movable partition, Corporate events.



Level	Surface	Dimensions	Height	Theater	Reception	Banquet	School	Conference	Style U	Open Square	Half moon
2	740 ft ²	20 x 37 ft	11.9 ft	80 people	100 people	80 people	36 people	28 people	24 to 36 people	24 to 36 people	48 people

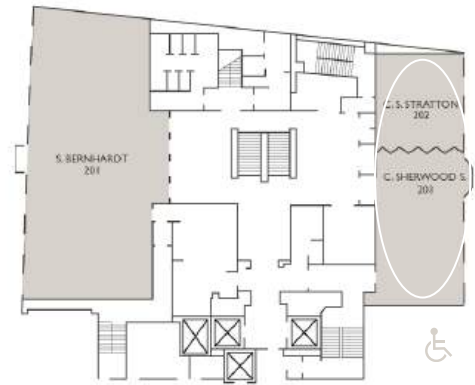


STRATTON SHERWOOD VENUE

2nd floor

The bright and elegant Stratton Sherwood Venue is ideal for a large event. With beautiful natural light and ample space it is very versatile.

Keywords: Natural light, Large, Versatile, Movable partition, Corporate events.



Level	Surface	Dimensions	Height	Theater	Reception	Banquet	School	Conference	Style U	Open Square	Half moon
2	1260 ft ²	20 x 63 ft	11.9 ft	140 people	160 people	130 people	60 people	50 people	40 to 60 people	44 to 66 people	72 people





RAVEL VENUE

Spacious and versatile, the Ravel Venue is ideal for elegant banquets, conferences or training sessions. Its large dimensions, refined decor and warm lighting make it a perfect choice for memorable events, whether private or corporate.

Keywords: Banquets, Conferences, Versatility, Elegance, Ballroom, Wooden Column and Elegant.

3rd floor



Level	Surface	Dimensions	Height

3	1656 ft ²	23 x 72 ft	11.3 ft
---	-------------------------	---------------	------------

Theater	Reception	Banquet	School

180 people	200 people	160 people	100 people
---------------	---------------	---------------	---------------

Conference	Style U	Open Square	Half moon

58 people	40 to 60 people	44 to 66 people	72 people
--------------	--------------------	--------------------	--------------



HEINTZMAN VENUE

The Heintzman Venue is an intimate lounge bathed in natural light, offering an ideal private setting for small meetings or confidential events. Its careful layout and its adapted access for people with reduced mobility make it a practical and welcoming space.

Keywords: Intimate lounge, Natural light, Private, Meetings, TV screen.

3rd floor



Level	Surface	Dimensions	Height	Theater	Reception	Banquet	School	Conference	Style U	Open Square	Half moon
3	378 ft ²	21 x 18 ft	11.6 ft	30 people	30 people	30 people	18 people	16 people	10 to 15 people	12 to 18 people	12 people



BELFOUR VENUE

The Belfour Venue is ideal for hosting groups of 20 to 30 people. Boasting a pleasant view and beautiful natural light, this versatile room is ideal for U-shaped configurations, elegant dinners or convivial cocktails.

Keywords: Medium group, Natural light, View, U-shape, Dinner, Cocktail.



3rd floor



Icon	Level	Surface	Dimensions	Height	
	3	567 ft ²	21 x 27 ft	11.6 ft	
	60 people		60 people		50 people
	24 people		22 people		16 to 24 people
	20 to 30 people		24 people		



ALBANI VENUE

The Albani Venue is a small meeting room designed for board meetings or private meetings. Intimate and elegant, it offers comfortable armchairs, an integrated screen and natural light, creating an ideal setting for professional discussions in small groups (up to 8 people).

Keywords: Intimate, Private, Boardroom, Armchairs, Integrated screen, Natural light.

3rd floor



Level	Surface	Dimensions	Height	Theater	Reception	Banquet	School	Conference	Style U	Open Square	Half moon
3	294 ft ²	21 x 14 ft	11.6 ft	- people	- people	- people	- people	8 people	- people	- people	- people



INTERCONTINENTAL®
MONTREAL

WILCOM VENUE

4th floor

The Wilcom room is an ideal lounge with a central fireplace, perfect for small intimate meetings in a warm and private setting. Designed to be accessible to all, it also has access adapted for people with reduced mobility. Here the central fireplace is included in the rental.

Keywords: Central foyer, Intimate, Private, Meetings, TV screen.



Level	Surface	Dimensions	Height	Theater	Reception	Banquet	School	Conference	Style U	Open Square	Half moon
4	500 ft ²	20 x 25 ft	11.3 ft	48 people	60 people	40 people	24 people	22 people	16 to 24 people	20 to 30 people	24 people





JOSEPH VENUE

The Joseph Venue offers a perfect space for small, intimate meetings. Its windows open onto the interior space of the Nordheimer building. Here the central fireplace is included in the rental.

Keywords: Intimate, Private, Meetings, Disabled access, Bright, TV screen.

and
4th floor



Level	Surface	Dimensions	Height	Theater	Reception	Banquet	School	Conference	Style U	Open Square	Half moon
4	475 ft ²	19 x 25 ft	11.3 ft	36 people	40 people	30 people	18 people	22 people	10 to 15 people	12 to 18 people	18 people

DELAFOND VENUE

The Delafond room is, like the Wilcom room, an ideal lounge with a central fireplace, perfect for small intimate meetings in a warm and private setting. Designed to be accessible to all, it also has access adapted for people with reduced mobility. Here the central fireplace is included in the rental.

Keywords: Central foyer, Intimate, Private, Meetings, TV screen.

4th floor



Level	Surface	Dimensions	Height	Theater	Reception	Banquet	School	Conference	Style U	Open Square	Half moon
4	425 ft ²	17 x 25 ft	11.3 ft	48 people	50 people	40 people	24 people	22 people	14 to 21 people	16 to 24 people	24 people





BELLATINI VENUE

4th floor

The Bellatini Venue, like the Heintzman Venue on the lower floor, is an intimate lounge bathed in natural light, offering an ideal private setting for small meetings or confidential events. Its layout is neat and its access is adapted for people with reduced mobility.

Keywords: Intimate lounge, Natural light, Private, Meetings, TV screen.



Level	Surface	Dimensions	Height	Theater	Reception	Banquet	School	Conference	Style U	Open Square	Half moon
4	378 ft ²	21 x 18 ft	11.6 ft	30 people	30 people	30 people	18 people	16 people	10 to 15 people	12 to 18 people	12 people

FRASER VENUE

4th floor

The Fraser Venue, like the Belfour Venue but on the floor above, is ideal for hosting groups of 20 to 30 people. Boasting pleasant views and beautiful natural light, this versatile room is ideal for U-shaped configurations, elegant dinners or convivial cocktails.

Keywords: Medium group, Natural light, View, U-shaped configuration, Dinner, Cocktail.



Level	Surface	Dimensions	Height	Theater	Reception	Banquet	School	Conference	Style U	Open Square	Half moon
4	567 ft ²	21 x 27 ft	11.6 ft	60 people	60 people	50 people	24 people	22 people	16 to 24 people	20 to 30 people	24 people





WATSON VENUE

The Watson Venue, like the Albani Venue on the lower floor, is a small meeting room designed for board meetings or private meetings. Intimate and elegant, it offers comfortable seating, a built-in screen and natural light, creating an ideal setting for small business discussions (up to 8 people).

Keywords: Intimate, Private, Boardroom, Armchairs, Integrated screen, Natural light.

4th floor



Level	Surface	Dimensions	Height	Theater	Reception	Banquet	School	Conference	Style U	Open Square	Half moon
4	294 ft ²	21 x 14 ft	11.6 ft	- people	- people	- people	- people	8 people	- people	- people	- people

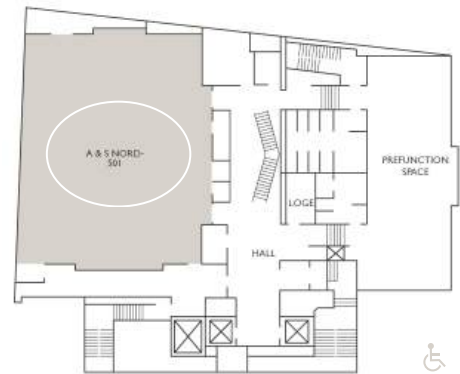


NORDHEIMER VENUE

5th floor

The Nordheimer Venue is a modern and versatile space, perfect for large-scale events or exclusive meetings. Bright and spacious, it stands out for its contemporary design and functional equipment. Its large private terrace offers an exceptional setting for receptions or outdoor relaxation. The private floor completes the experience with an elegant and intimate space, ideal for confidential meetings or events.

Keywords: Modern, Bright, Terrace, Private floor, Spacious, Functional.



Level	Surface	Dimensions	Height	Theater	Reception	Banquet	School	Conference	Style U	Open Square	Half moon
5	3 365 ft ²	66 x 55 ft	17 ft	350 people	400 people	270 people	215 people	58 people	44 to 66 people	52 to 78 people	144 people

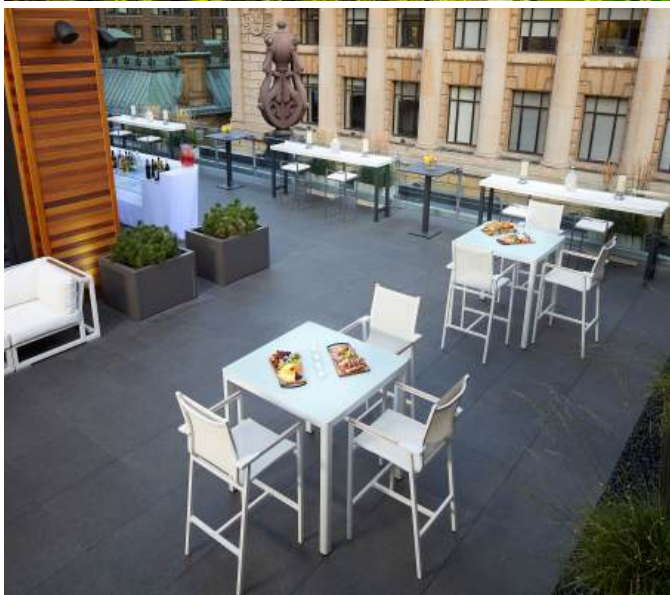




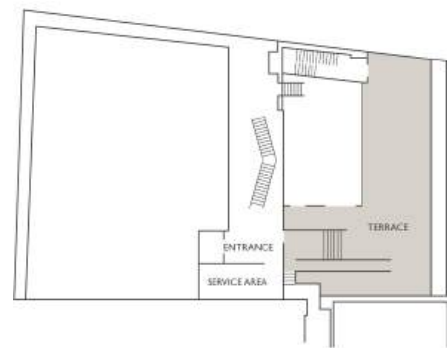
TERRACE VENUE

Nordheimer's L-shaped 5th-floor terrace offers spectacular views of Old Montreal. Spacious and modern, it's the perfect setting for outdoor events or private relaxation.

Keywords: L-shaped terrace, Breathtaking view, Old Montreal, Spacious, Modern.



Terrace



Level

6



Surface

1760
ft²



Dimensions

-
ft



Height

-
ft



Theater

-
people



Reception

140
people



Banquet

-
people



School

-
people



Conference

-
people



Style U

-
people



Open Square

-
people



Half moon

-
people





Extend your day in style. After your meeting or event, let the day continue around a gourmet table.

At the Osco! restaurant, our chef showcases seasonal produce, through a Table d'Hôte offered each week, to create warm, responsible and refined cuisine, perfect for sharing a friendly moment.

**WANT A MORE EXCLUSIVE SETTING FOR YOUR EVENTS?
KEEP OUR OSCO SPACES PRIVATE! :**



The Rotunda

La Rotonde, offers a superb view of Place Riopelle, ideal for elegant meals or receptions. Can accommodate 6 to 12 people seated.

L'Entre-Deux

L'Entre-Deux, an intimate and discreet setting, perfect for private meetings or small events. L'Entre-Deux is a room with large windows offering a bath of natural light and a view of Place Riopelle.

This space can accommodate 30 people seated and 50 people standing.





A FAVORITE PLACE TO DISCOVER ABSINTHE

After your event, extend the evening in the cozy and intimate atmosphere of Sarah B.. This voluptuous absinthe bar, with its timeless charm, is the perfect location for meetings over a drink, whether professional or friendly.

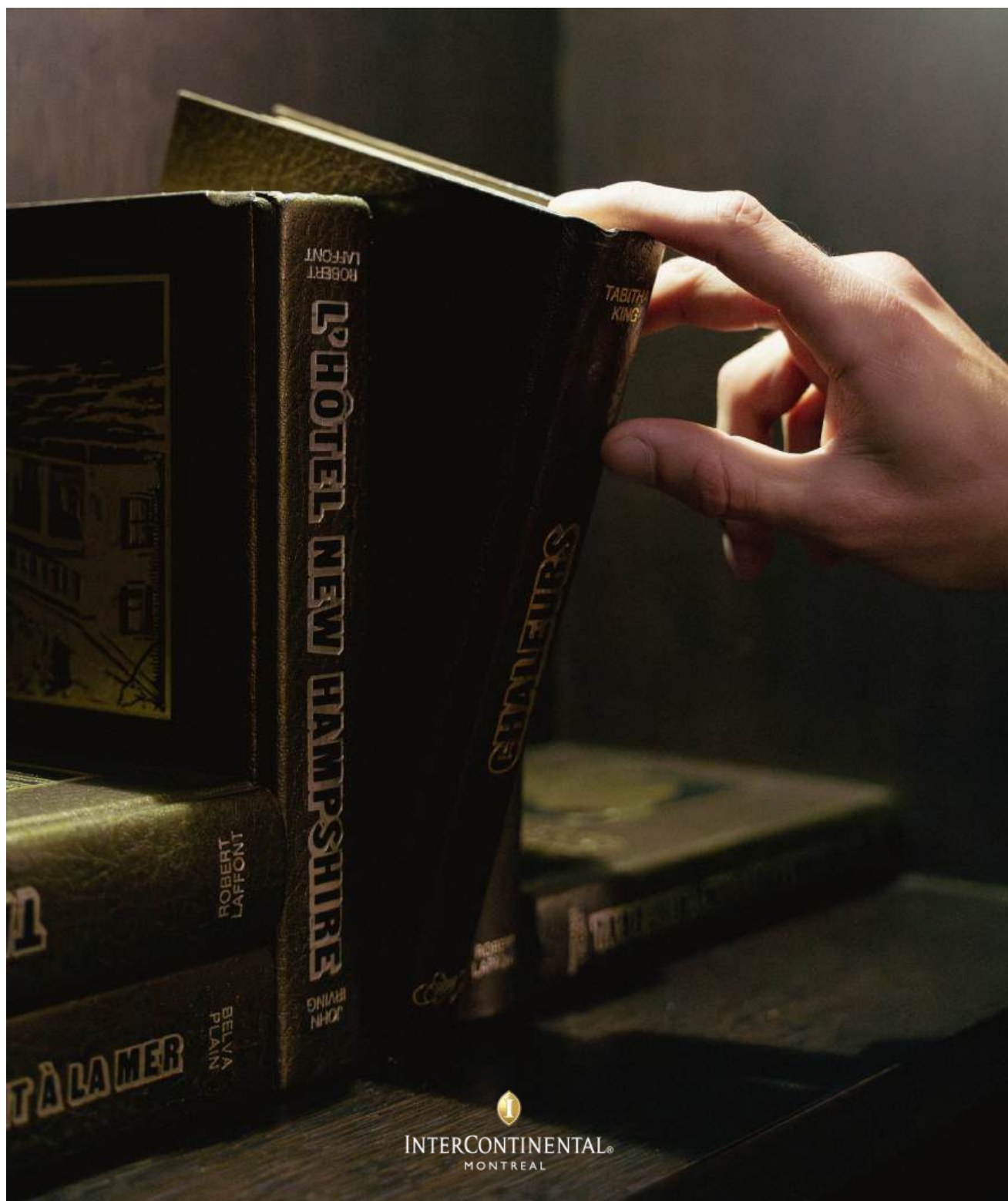
Enjoy signature cocktails or indulge in a unique experience: an absinthe tasting, showcasing Quebec's most refined creations.

Bar Sarah B pays tribute to the legendary actress Sarah Bernhardt, an icon of 19th century theater.

Nicknamed "the Divine", she captivated the world with her captivating voice and charismatic stage presence.

Absinthe, a spirit which, like the actress, has fascinated and seduced with its mysteries for centuries.





InterContinental Montréal
360, rue Saint-Antoine Ouest, Montréal (Québec) H2Y 3X4 T: |
514 987-9900 F: | 514 847-8536
banquets@ic-montreal.com
montreal.intercontinental.com